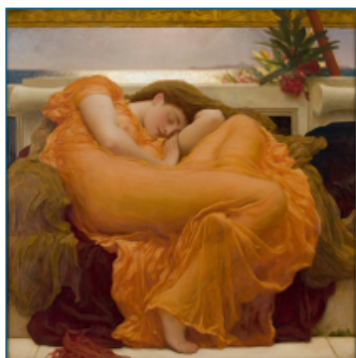




FOR IMMEDIATE RELEASE

**MEADOWS MUSEUM ANNOUNCES “FLAMING JUNE MONTH”
AS *THE SENSE OF BEAUTY: SIX CENTURIES OF PAINTING* EXHIBITION
ENTERS ITS FINAL WEEKS**

Paying homage to the exhibition’s iconic masterpiece, the museum will offer an array of programming—including spotlight talks, oil painting activities, and an interactive sensory cart—before the exhibition closes June 22



Frederic Leighton (English, 1830–1896),
Flaming June, c. 1895. Oil on canvas, 46
7/8 × 46 7/8 in. (119.1 × 119.1 cm).
Museo de Arte de Ponce. The Luis A.
Ferré Foundation, Inc. 63.0406.

DALLAS, SMU (May 14, 2025) – The Meadows Museum, SMU, is entering the final weeks of *The Sense of Beauty: Six Centuries of Painting from Museo de Arte de Ponce*, which closes June 22. Visitors have just one more month to see this extraordinary traveling exhibition from Puerto Rico, featuring more than 60 masterworks by leading lights of European, American and Puerto Rican painting, some traveling to the mainland U.S. for the first time. The Meadows is adding a final flourish to this monumental exhibition with “Flaming June Month,” offering a series of programs inspired by Frederic Leighton’s iconic masterpiece in orange, *Flaming June* (1895). From lectures and weekly spotlight talks to interactive experiences and painting sessions, there is something for everybody. For the schedule of events, go to meadowsmuseumdallas.org/calendar/.

Programming for “Flaming June Month” is as follows:

COFFEE WITH THE CURATOR

Tuesday, June 3, 10:30–11:30 a.m.

Exclusively for Meadows Museum members at the Individual level and above; to become a member and attend, contact the Membership Department at 214-768-2765.

Join Meadows Museum Curator Patricia Manzano Rodríguez for a casual coffee break to discuss *Flaming June* and other extraordinary artworks exhibited in *The Sense of Beauty*.

LECTURE: Flaming June: The Making of an Icon | British Painting from the Museo de Arte de Ponce

Thursday, June 5, 6–8 p.m.

Exclusively for Meadows Museum members at the Individual level and above; to become a member and attend, contact the Membership Department at 214-768-2765.

Leighton’s *Flaming June* is heralded as a masterpiece of 19th-century painting, but its path to recognition was far from straightforward. Created in 1895, in the twilight of the Victorian era, the painting quickly fell into obscurity and vanished from public view until its astonishing rediscovery in 1962, when it was found in a house on the outskirts of London that was set for demolition. Through a most unexpected sequence of events, the painting’s fame was rekindled, and today it is known affectionately as the “Mona Lisa of the Southern Hemisphere.” Join Patrick Monahan, advisor to the Museo de Arte de Ponce and contributor to *Country Life* and *Vanity Fair*, as he unravels the extraordinary transatlantic journey of this iconic painting, from forgotten relic to one of the world’s most beloved artworks. This program is presented by the

Royal Oak Foundation. A reception with dry snacks and soda will immediately follow in the Gene and Jerry Jones Great Hall.

SPOTLIGHT TALKS: *Flaming June*

Saturdays, June 7, 14 and 21, 11:30–11:50 a.m.

Thursday, June 19, 7:30–7:50 p.m.

Free with museum admission

Museum docents will be on hand in the Virginia Meadows Galleries for 20-minute talks on the iconic *Flaming June*.

SENSORY CART: *Flaming June*

Saturday–Sunday, June 14–15, 1–3 p.m.

Free with museum admission

Stop by the Sensory Cart in the galleries to explore art through the multiple senses. Visitors of all ages are invited to feel a variety of materials, experience specific scents and listen to recordings that evoke a work of art.

OPEN STUDIO: Oil Painting

Saturday–Sunday, June 21–22, 1–4 p.m.

Free with museum admission

Each month in the Education Studio, children of all ages are invited to participate in a hands-on art-making experience inspired by works on view in the museum. This June, guests will learn how to make oil paint from scratch and create their own masterpiece like *Flaming June*. All materials are provided, and advance registration is not required. This is not a drop-off program; children must be accompanied by at least one adult over the age of 18.

MEMENTOS AT THE GIFT SHOP

The Museo de Arte de Ponce has created a bilingual, fully illustrated scholarly catalogue, edited by curator Iraida Rodríguez-Negrón. The catalogue features an essay by Rodríguez-Negrón that recounts the history of the museum and the development of its collection, as well as entries for each of the exhibited works, contributed by scholars from Puerto Rico and the U.S. The hardcover, 200-page volume sells for \$45 in the Meadows Museum Gift Shop. Also available is a variety of exhibition-themed merchandise including stickers, postcards, magnets, pins, notebooks, compact mirrors, bookmarks, journals and matted prints suitable for framing.

This exhibition has been organized by the [Museo de Arte de Ponce](#) in collaboration with the [Meadows Museum](#), SMU, Dallas, and is funded by a generous gift from [The Meadows Foundation](#). This project is supported in part by the [National Endowment for the Arts](#). Promotional support is provided by [NBC 5/KXAS](#), [Telemundo 39/KXTX](#) and the [Dallas Tourism Public Improvement District](#).

The Meadows Museum is located on the SMU campus at 5900 Bishop Blvd., Dallas, Texas 75205. Hours are 10 a.m.–5 p.m. Tuesday–Saturday, with extended hours until 9 p.m. on Thursday, and 1–5 p.m. Sunday. Parking is free for museum visitors. Admission is \$12 for adults; \$10 for seniors 65 and up; \$4 for non-SMU students. Free Thursdays after 5 p.m. Free for Meadows Museum members, SMU faculty/staff/students, and active-duty military and their immediate family. Free for youth 18 and under thanks to a grant from Fichtenbaum Charitable Trust, Bank of America, N.A., Co-Trustee. For more information, go to meadowsmuseumdallas.org.

ABOUT THE MEADOWS MUSEUM

The Meadows Museum is the leading U.S. institution focused on studying and presenting the art of Spain. In 1962, Dallas businessman and philanthropist Algur H. Meadows donated his private collection of Spanish paintings and funds to start a museum at Southern Methodist University. The museum opened to the public in 1965, marking the first step in fulfilling Meadows's vision to create “a

small Prado for Texas.” Today, the Meadows is home to one of the largest and most comprehensive collections of Spanish art outside of Spain. The collection spans from the 10th to the 21st centuries and includes medieval objects, Renaissance and Baroque sculptures, and major paintings by Golden Age and modern masters.

###

MEADOWS MUSEUM CONTACT:

Becky Mayad

becky@mayadpr.com

214-697-7745